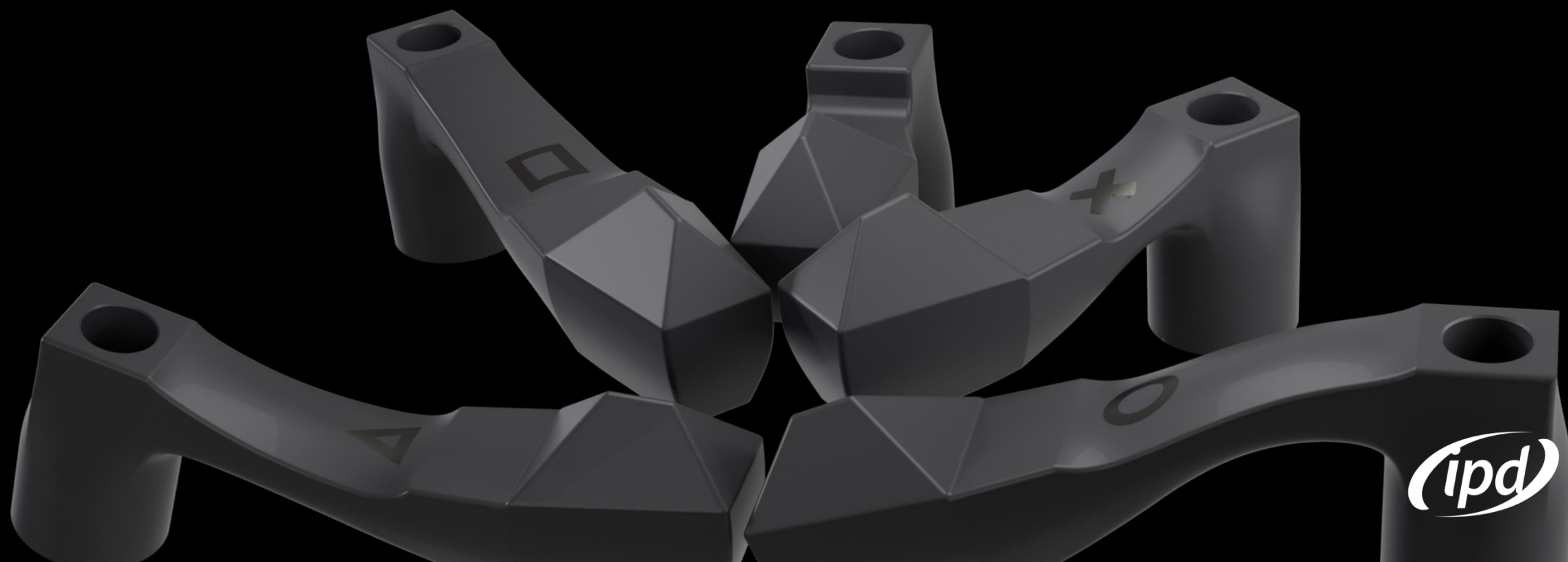


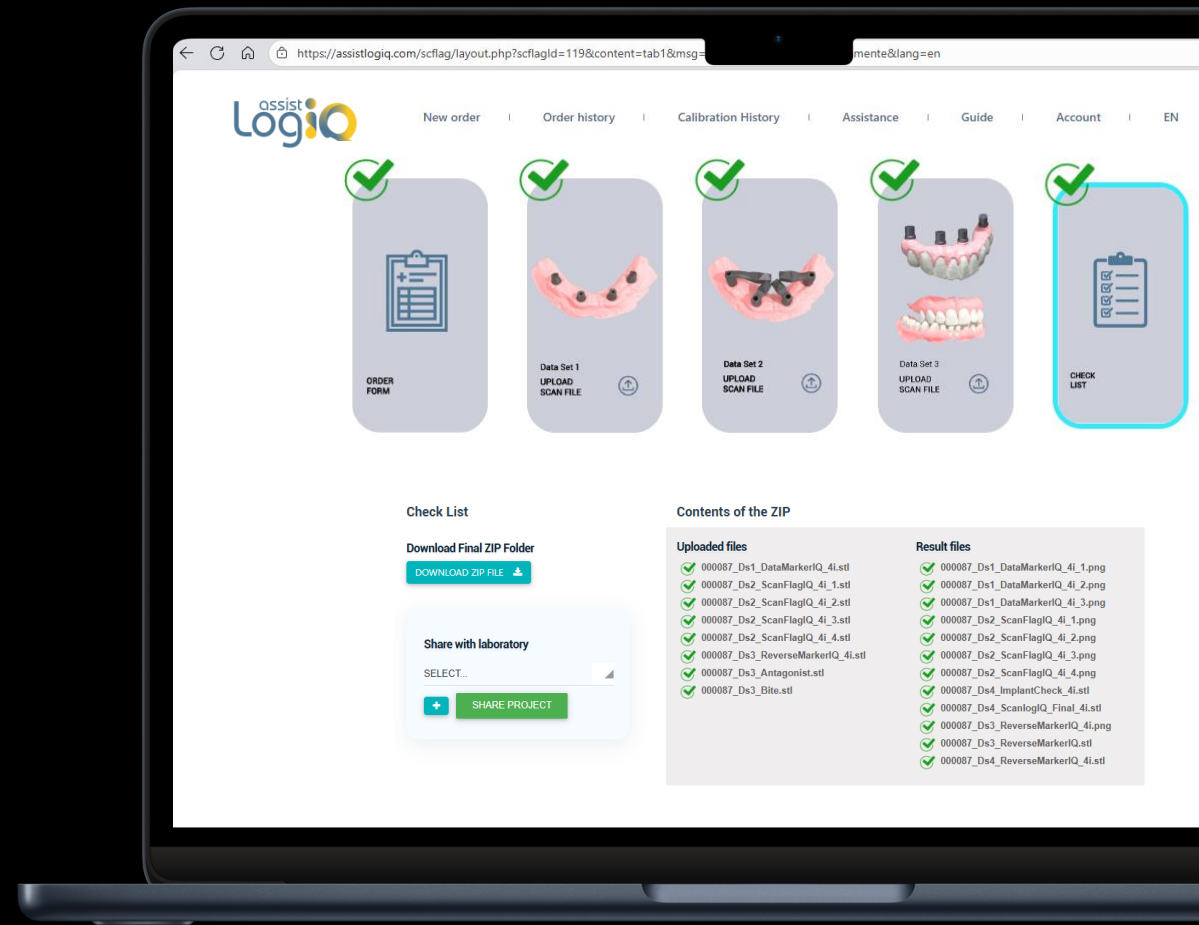
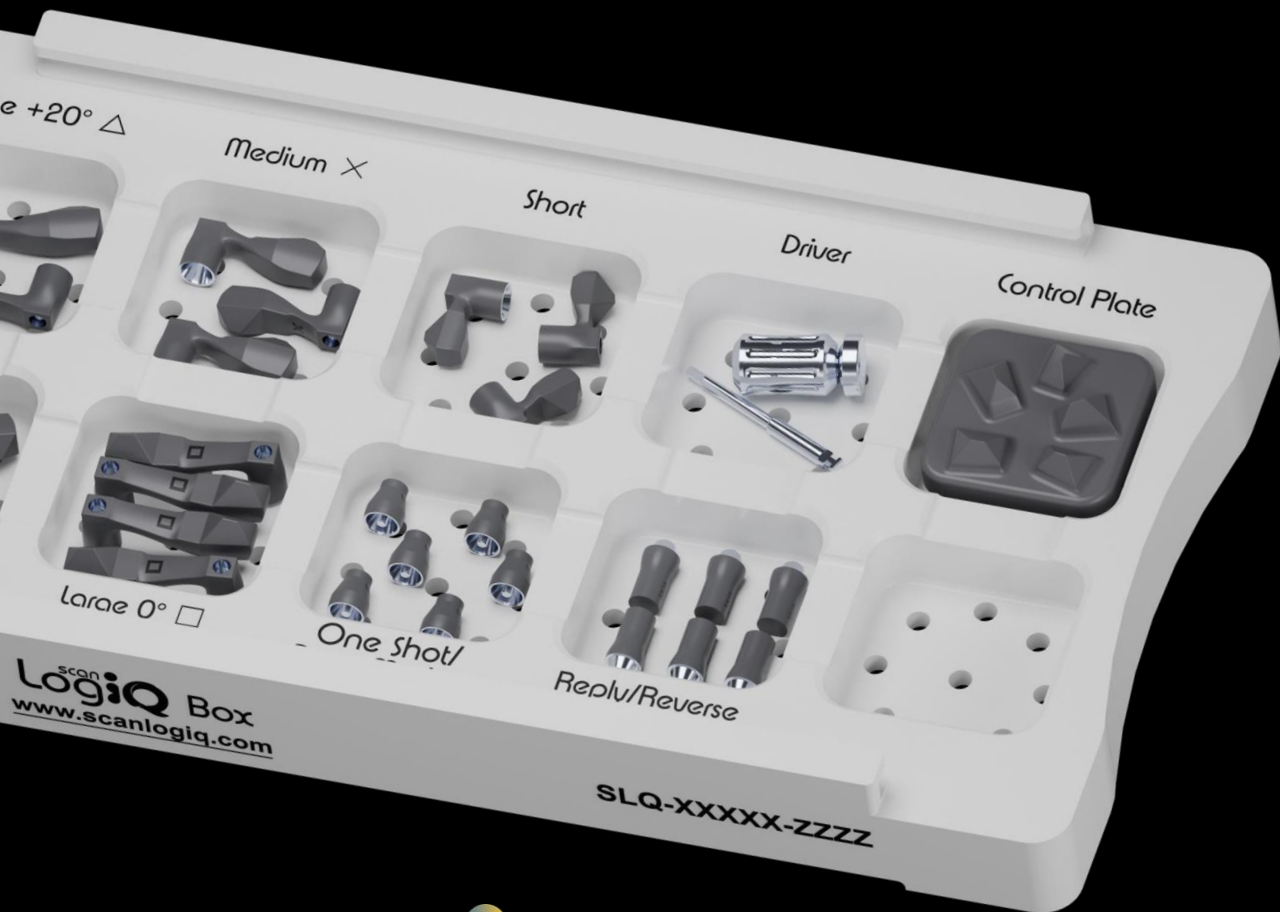
# SCANLOGIQ

SCAN RAPIDE, VALIDATION EN TEMPS RÉEL, EFFICACITÉ CLINIQUE





UN **ÉCOSYSTÈME** COMPLET ALLIANT LOGIQUE  
[LOGIC] ET INTELLIGENCE [IQ], PENSÉ POUR  
RÉVOLUTIONNER LE FLUX NUMÉRIQUE.



scan  
LogiQ





# KIT ALL-ON-X



# SCAN BODIES



# SCANFLAGS

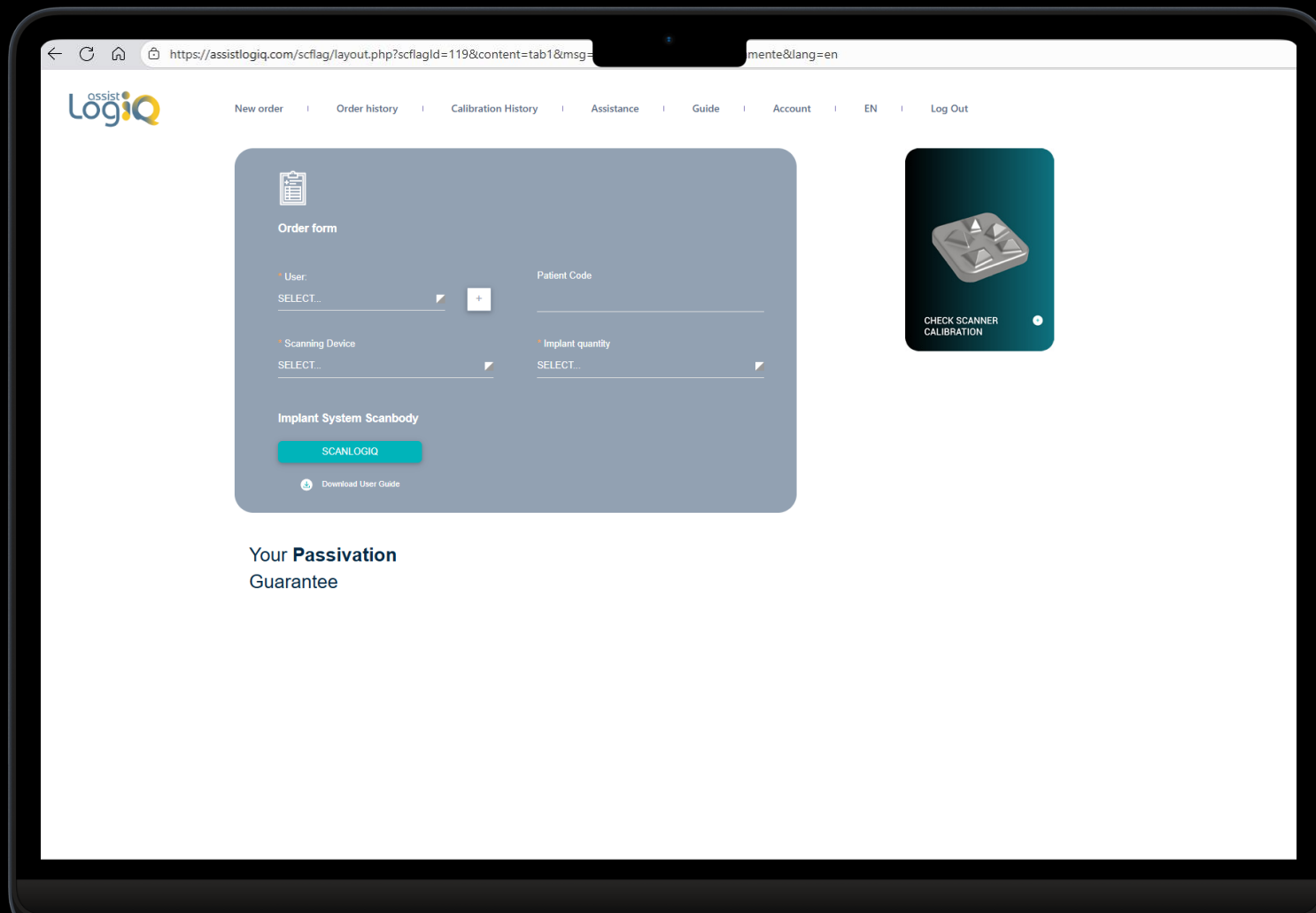
# COMPONENTS

# SCANLOGIQ BUND

A high-speed photograph of a water splash with a metallic, reflective surface. The water is captured in mid-air, creating a complex, flowing shape that resembles a ribbon or a liquid sculpture. The background is solid black, which makes the bright, shimmering water stand out. The lighting is dramatic, highlighting the curves and textures of the water.

assist  
LogiQ

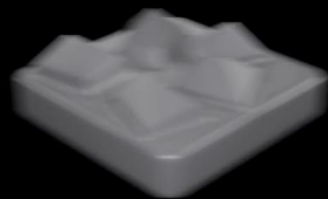
# ETAPE 0



Control Plate iQ check

Optional

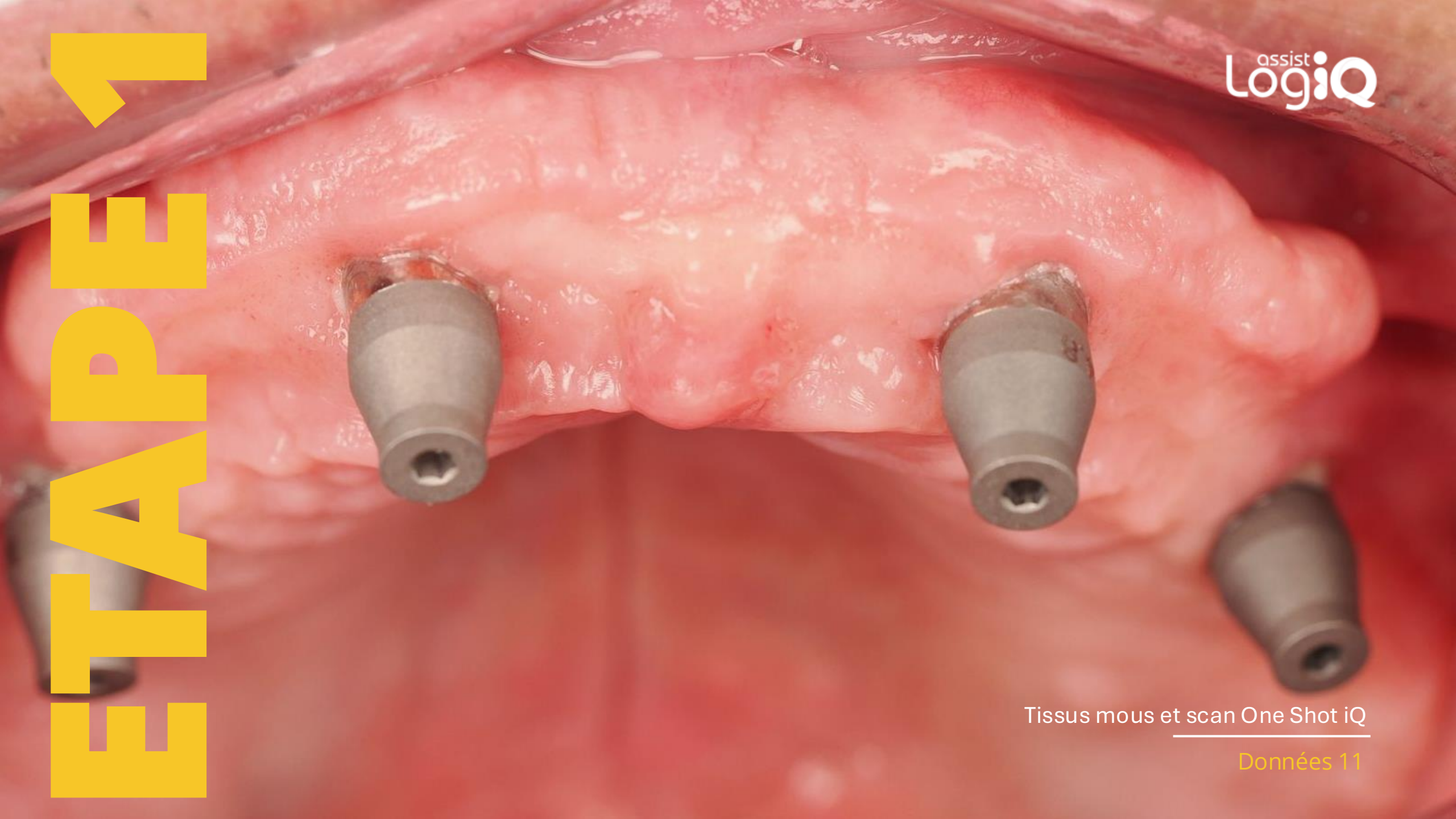
# ETAPPE 0



assist  
LogiQ

CONTROL  
PLATE IQ SCAN

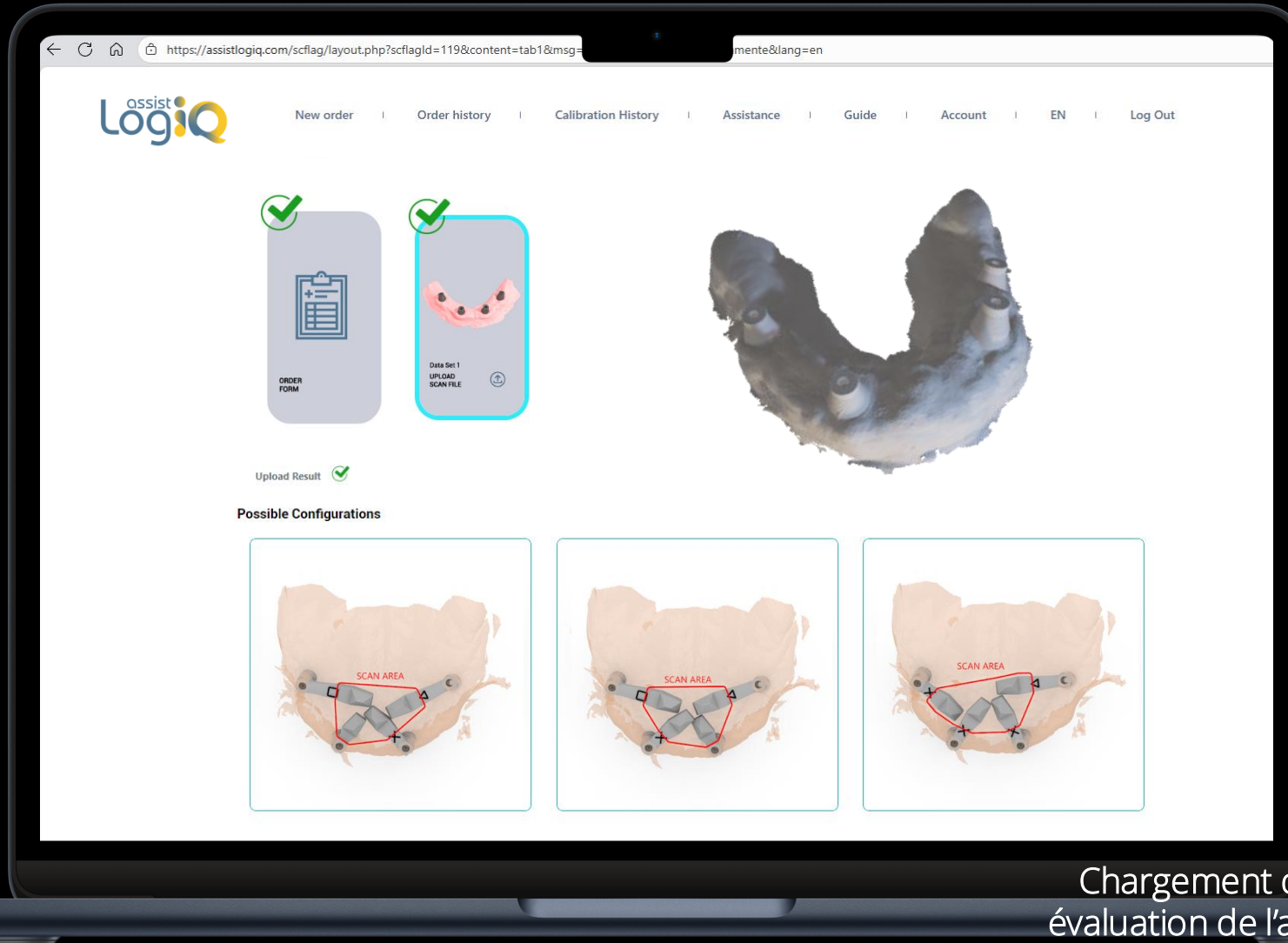
# ETAPE 1



Tissus mous et scan One Shot iQ

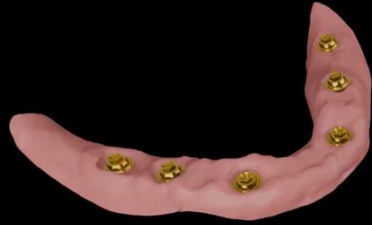
Données 11

# ETAPE 1



Chargement du fichier, validation et évaluation de l'assemblage Scan Flags

# ETAPE 1



assist  
LogiQ

ONE SHOT IQ  
ASSEMBLY

# ETAPE 2

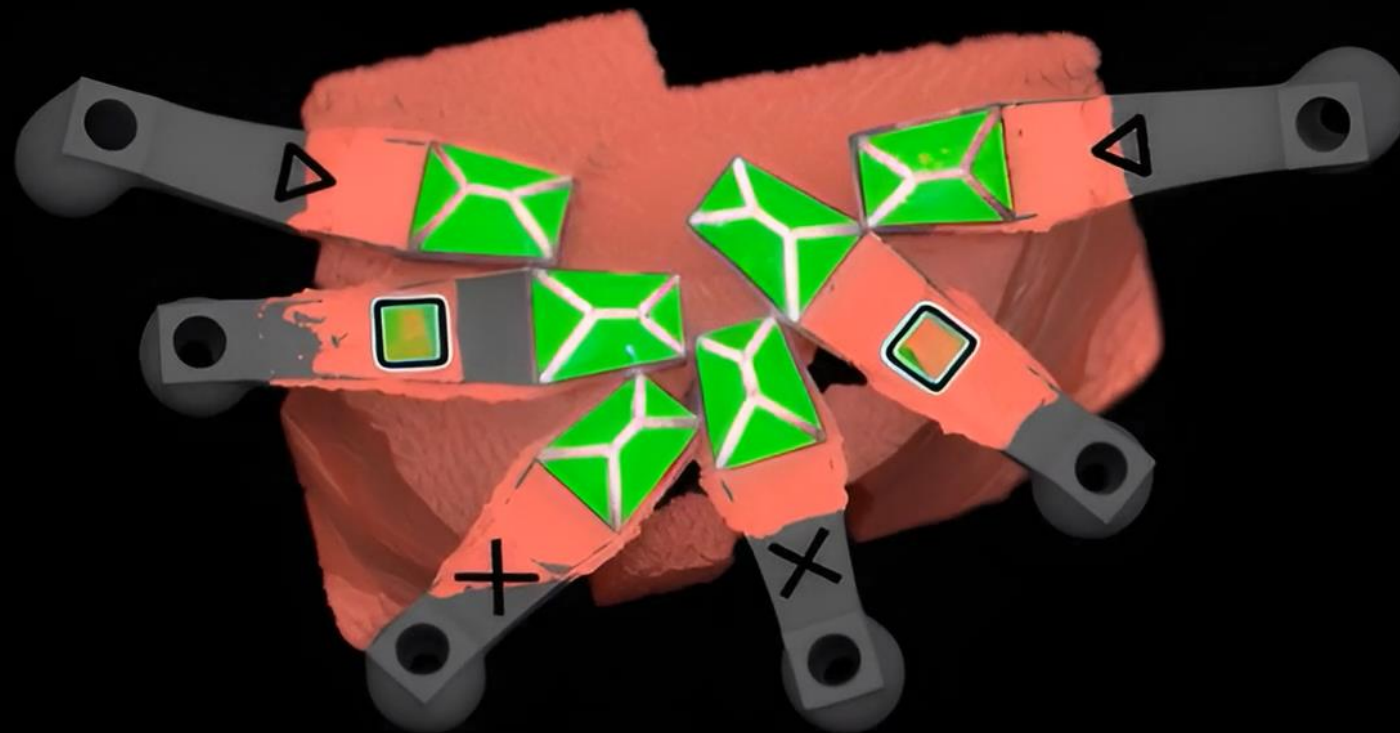
Scan des Scan Flags iQ (x4)

Données 2

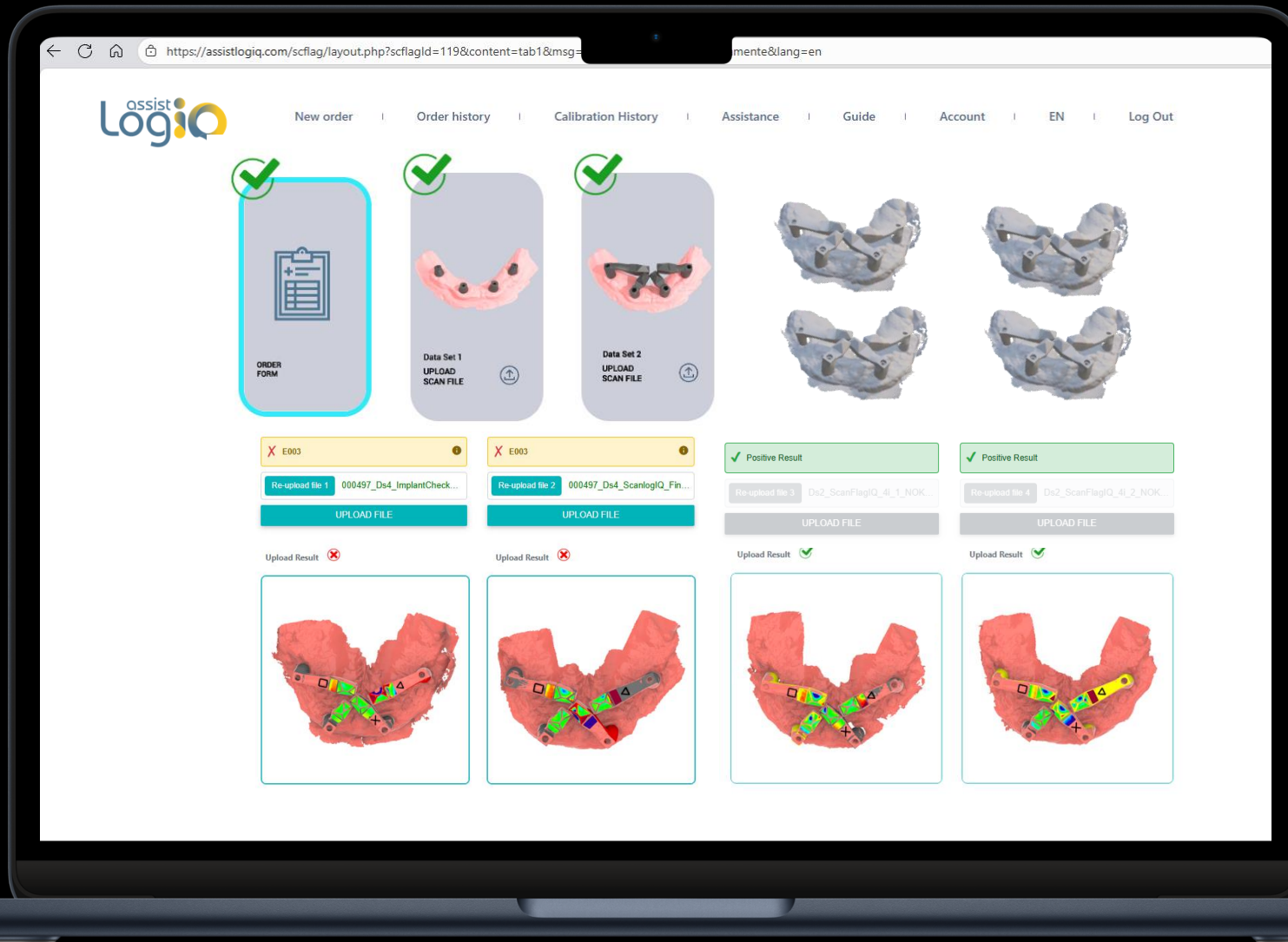
# ETAPE 2



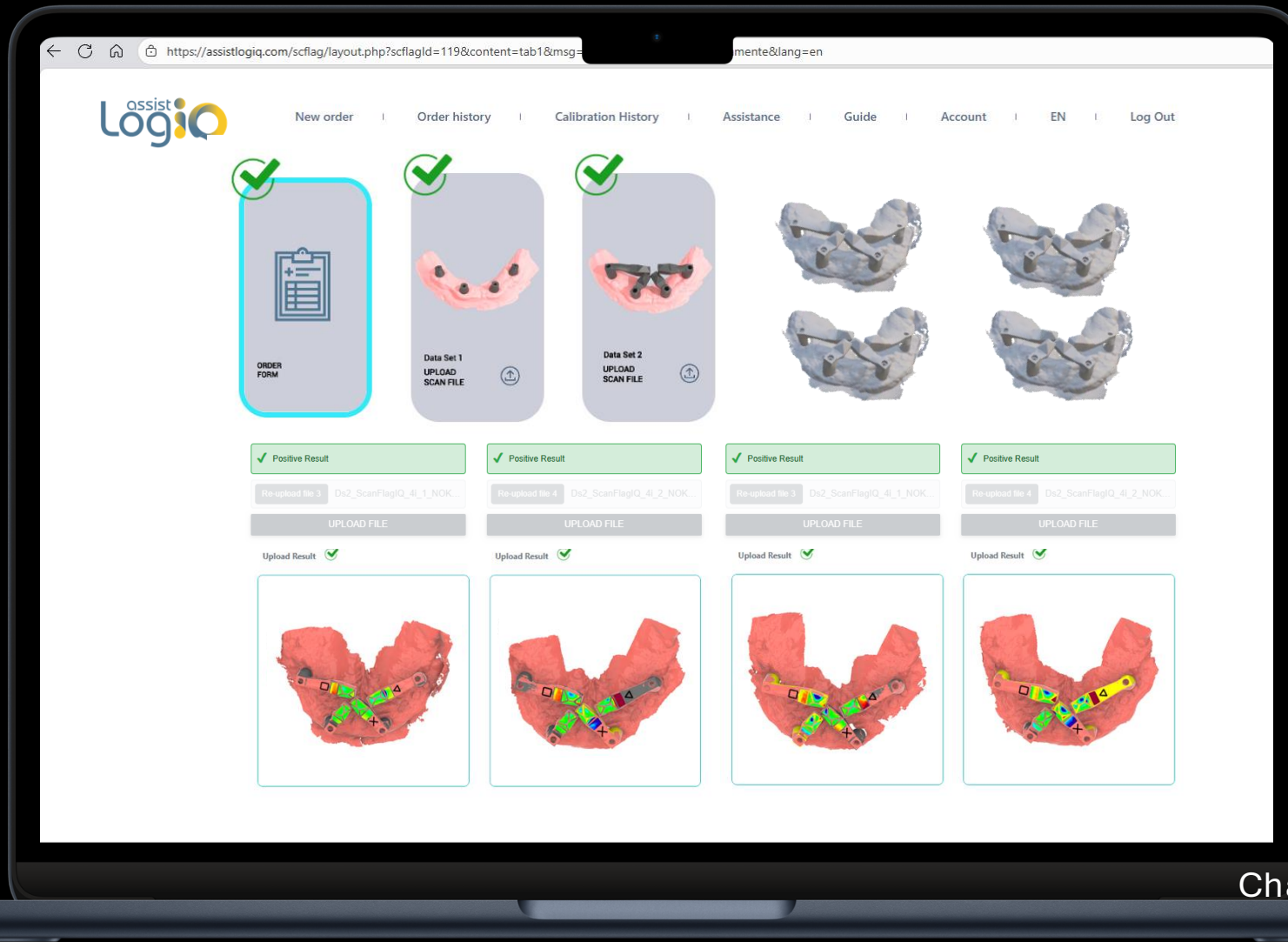
# ETAPE 2



# ETAPE 2



# ETAPE 2

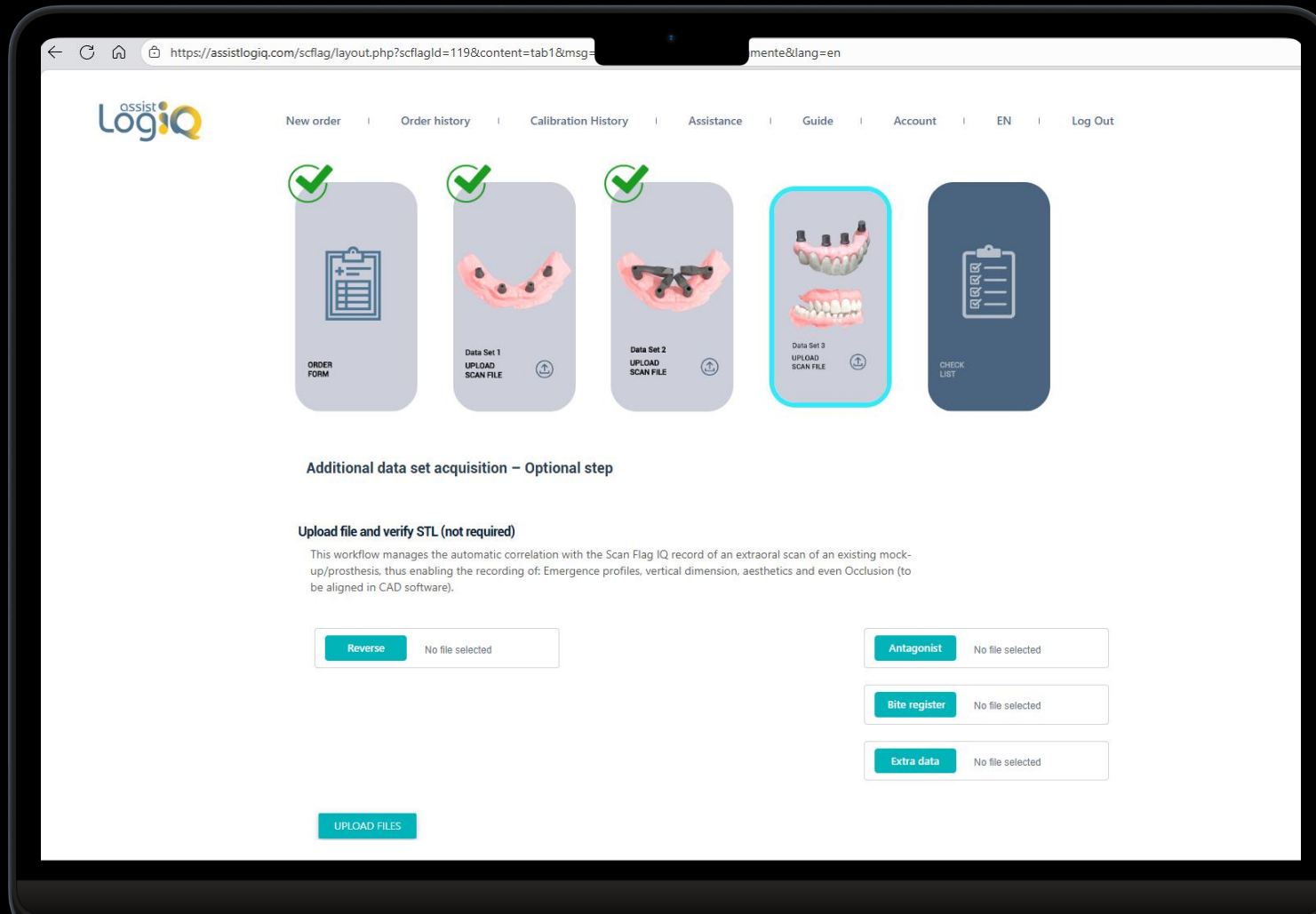


Chargement du fichier et validation immédiate

Données 2

# ETAPPE 3

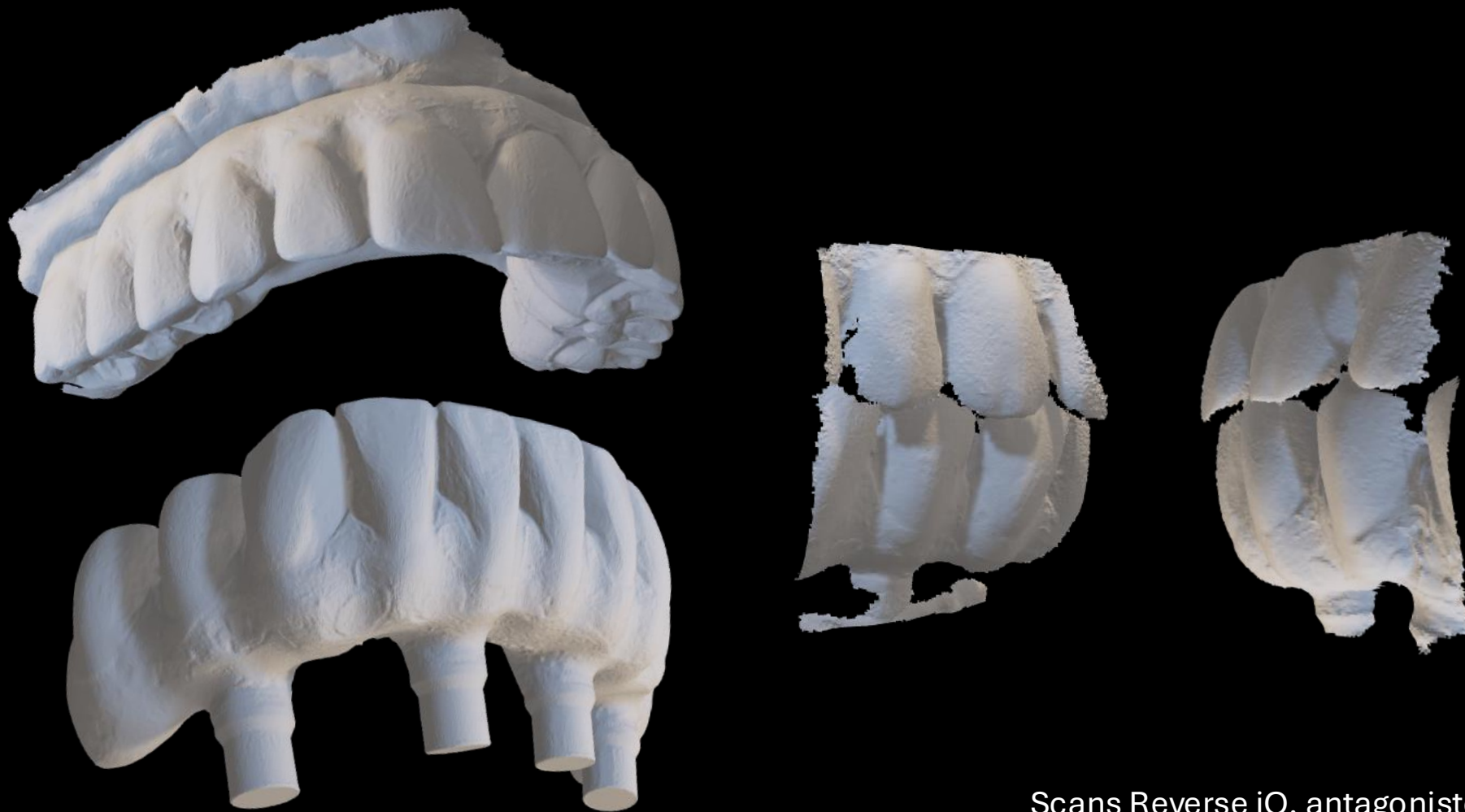
# 3 ETAPES



Scans additionnels

Données 3

# ETAPE 3



Scans Reverse iQ, antagoniste et  
enregistrement de l'occlusion

---

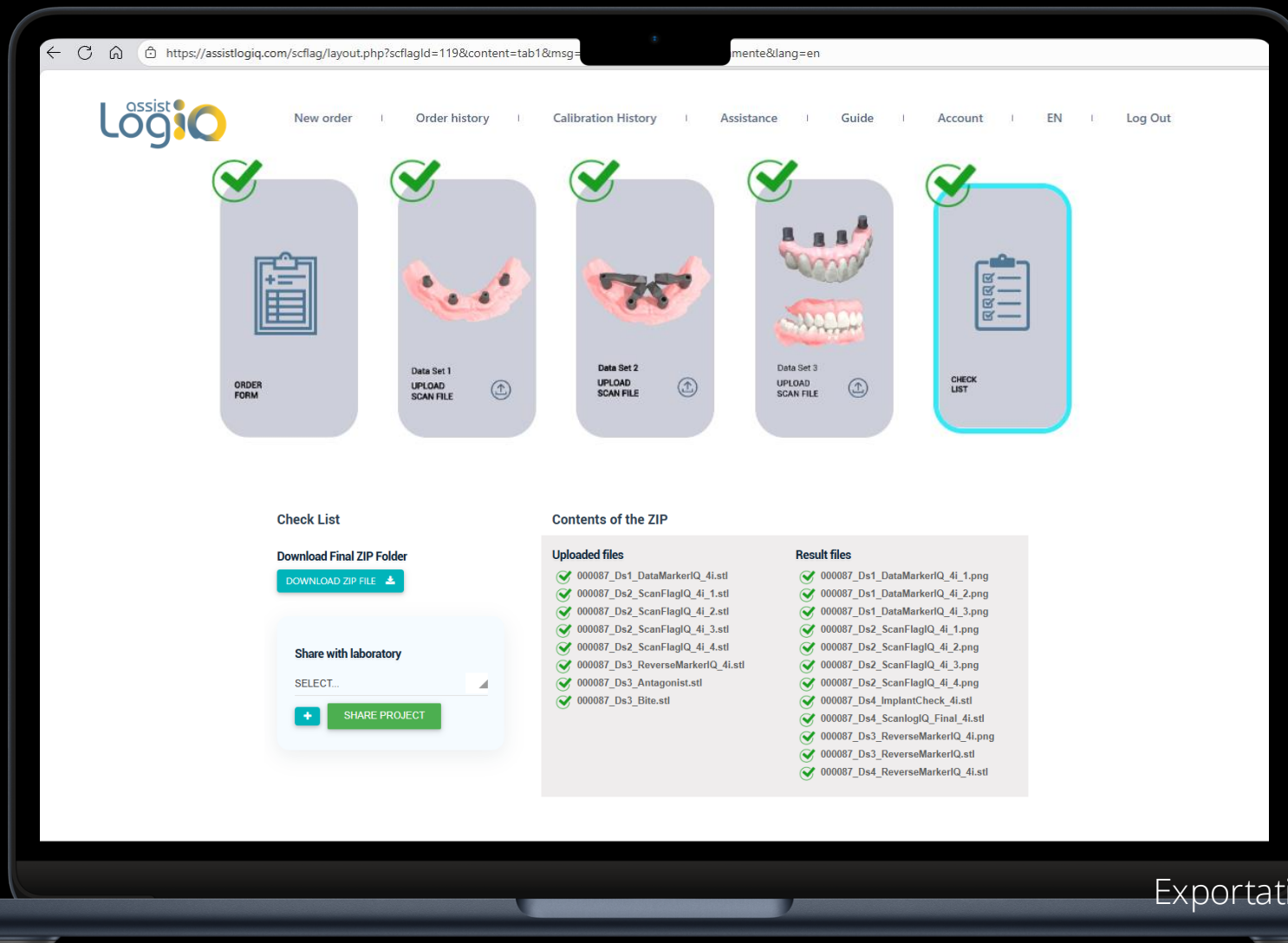
Données 3

# 3 ETAPES

The screenshot shows the assist LogiQ web interface. At the top, there is a navigation menu with links for 'New order', 'Order history', 'Calibration History', 'Assistance', 'Guide', 'Account', 'EN', and 'Log Out'. Below the menu is a progress bar with five steps, each with a green checkmark: 'ORDER FORM', 'Data Set 1 UPLOAD SCAN FILE', 'Data Set 2 UPLOAD SCAN FILE', 'Data Set 3 UPLOAD SCAN FILE' (highlighted with a blue border), and 'CHECK LIST'. Below the progress bar, the text 'Additional data set acquisition - Optional step' is followed by a green box labeled 'Positive outcome'. The main section is titled 'Upload file and verify STL (not required)' and contains a paragraph explaining the workflow. Below this, there are three upload buttons: 'Reverse' with a file name '000087\_Ds3\_ReverseMark...', 'Antagonist' with '000087\_Ds3\_Antagonist.stl', and 'Bite register' with '000087\_Ds3\_Bite.stl'. There is also an 'Extra data' button with 'No file selected'. To the left of these buttons is an 'Upload Result' section showing a 3D model of teeth with green markers. Below the upload buttons are two more buttons: 'UPLOAD FILES' and 'GO TO CHECK LIST'. On the right side of the interface, there are 3D models of dental arches and a bite register.

Reverse IQ, antagonist and bite register scans

# ETAPE 4



Exportation et téléchargement des fichiers validés

Données 4

Fichiers de sortie

---

Données 4

**EXPORTATION**

Résultat final ScanLogiQ

Maillages alignés\*



**EXPORTATION**

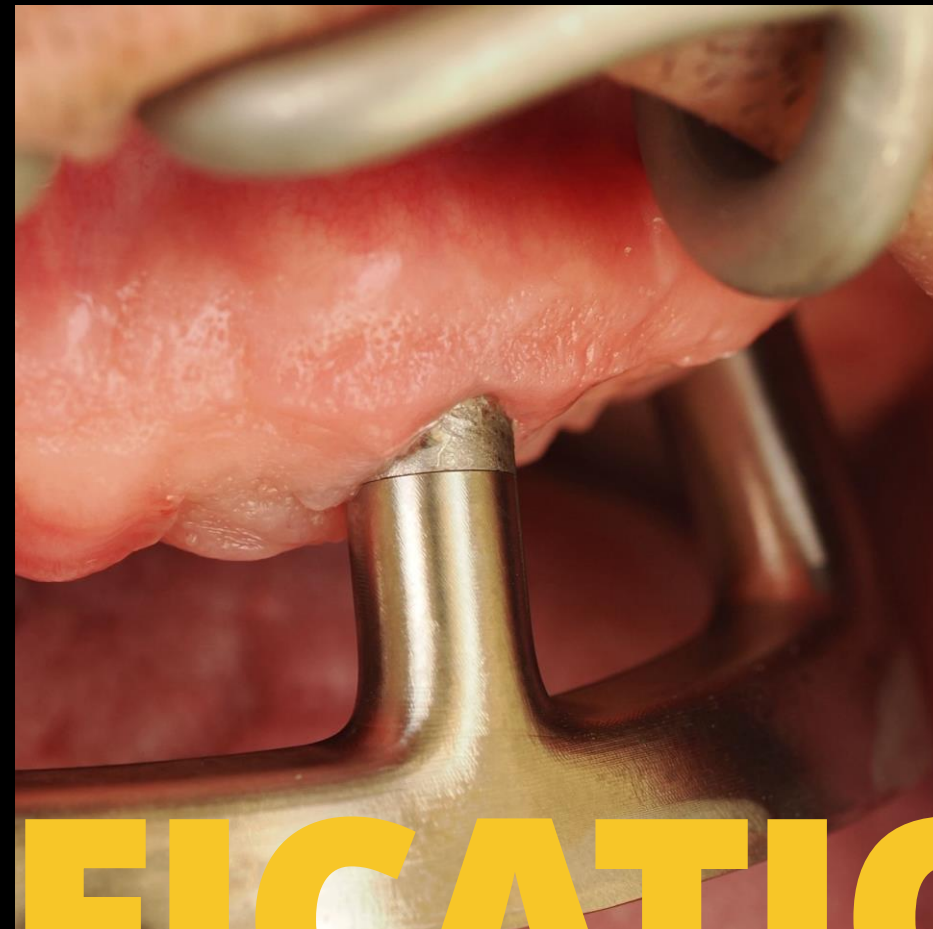
Test de Sheffield

Validation clinique

**VÉRIFICATION**

Test de Sheffield

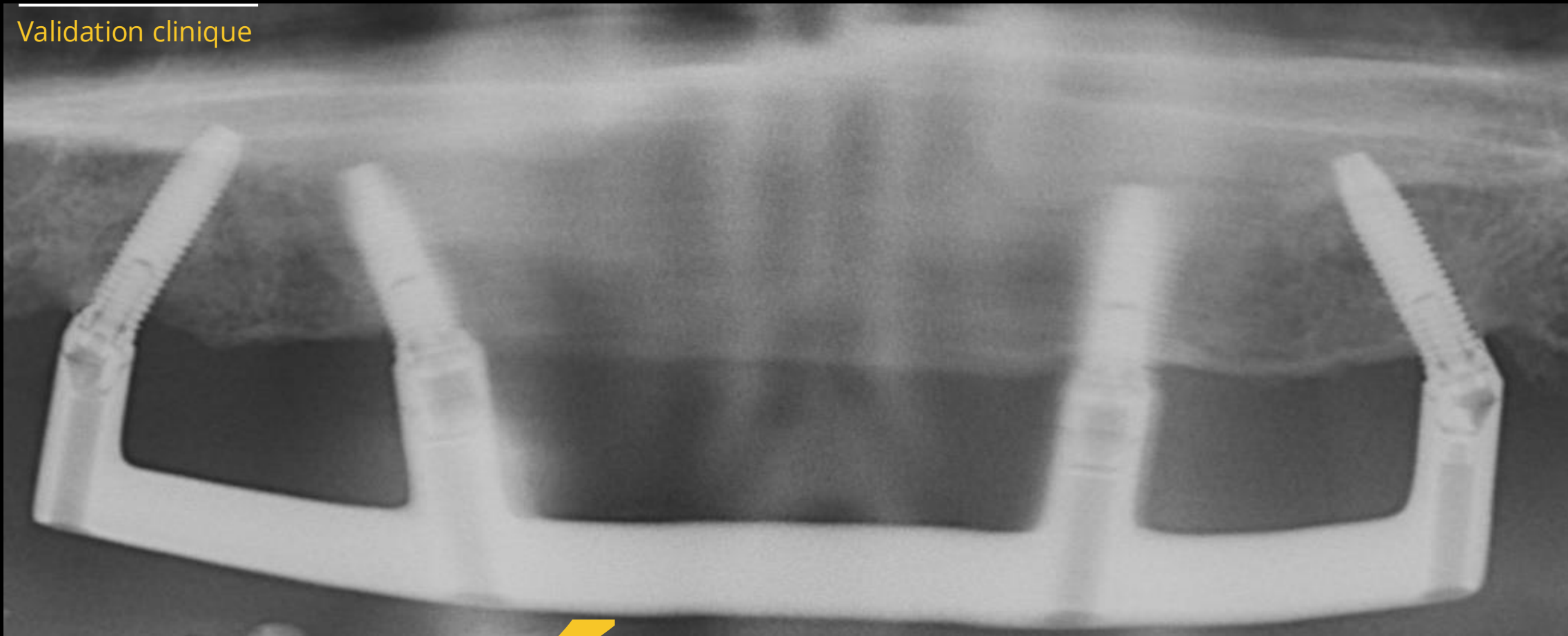
Validation clinique



**VÉRIFICATION**

Radiologie

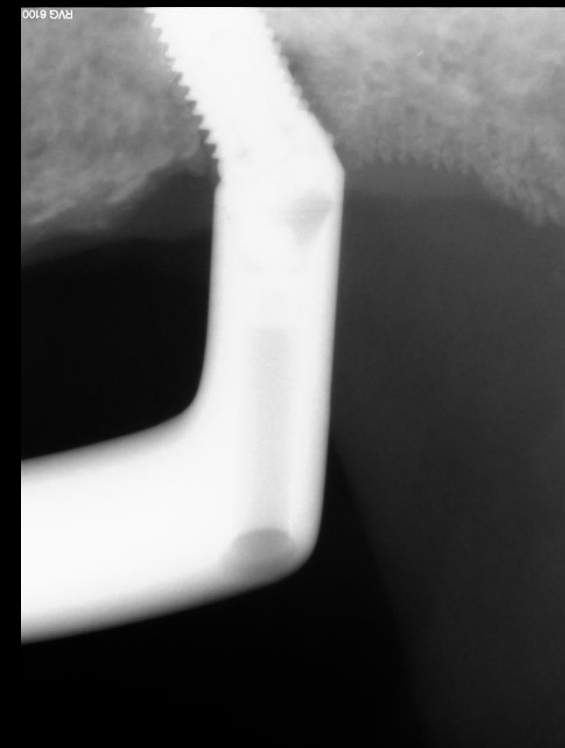
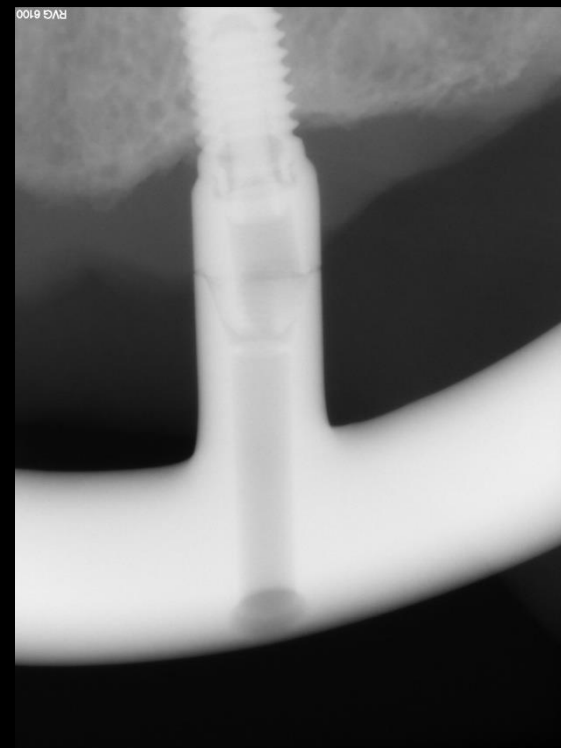
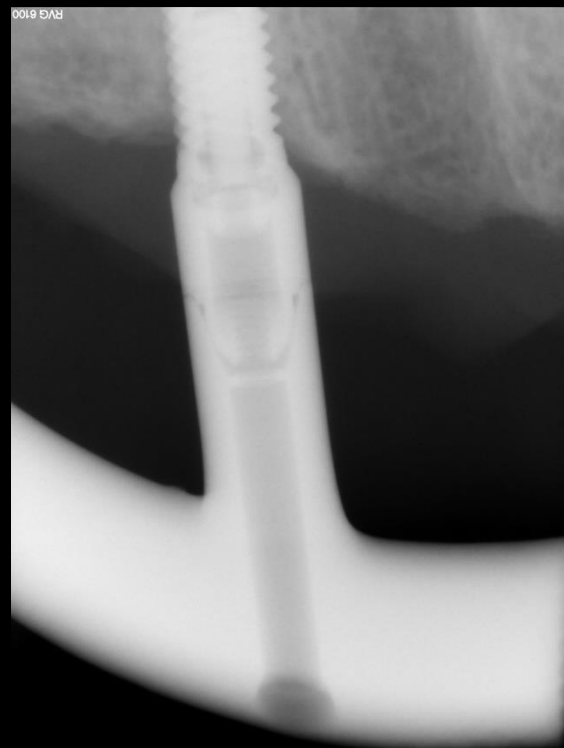
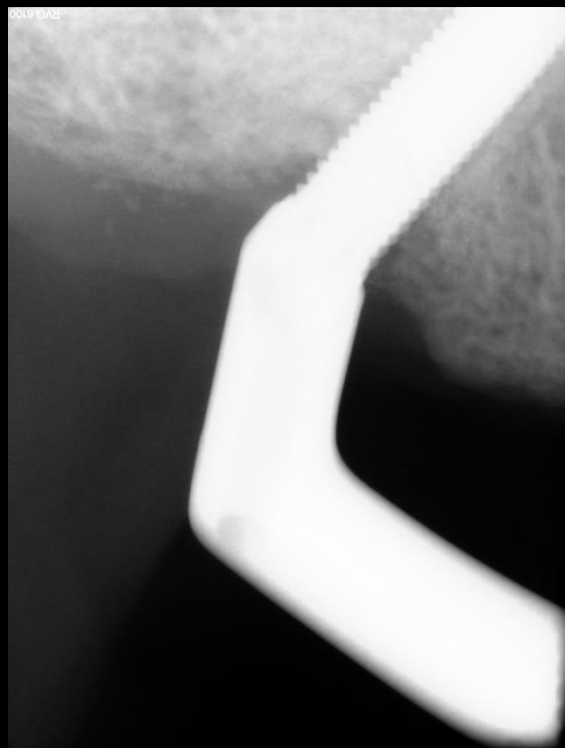
Validation clinique



**VÉRIFICATION**

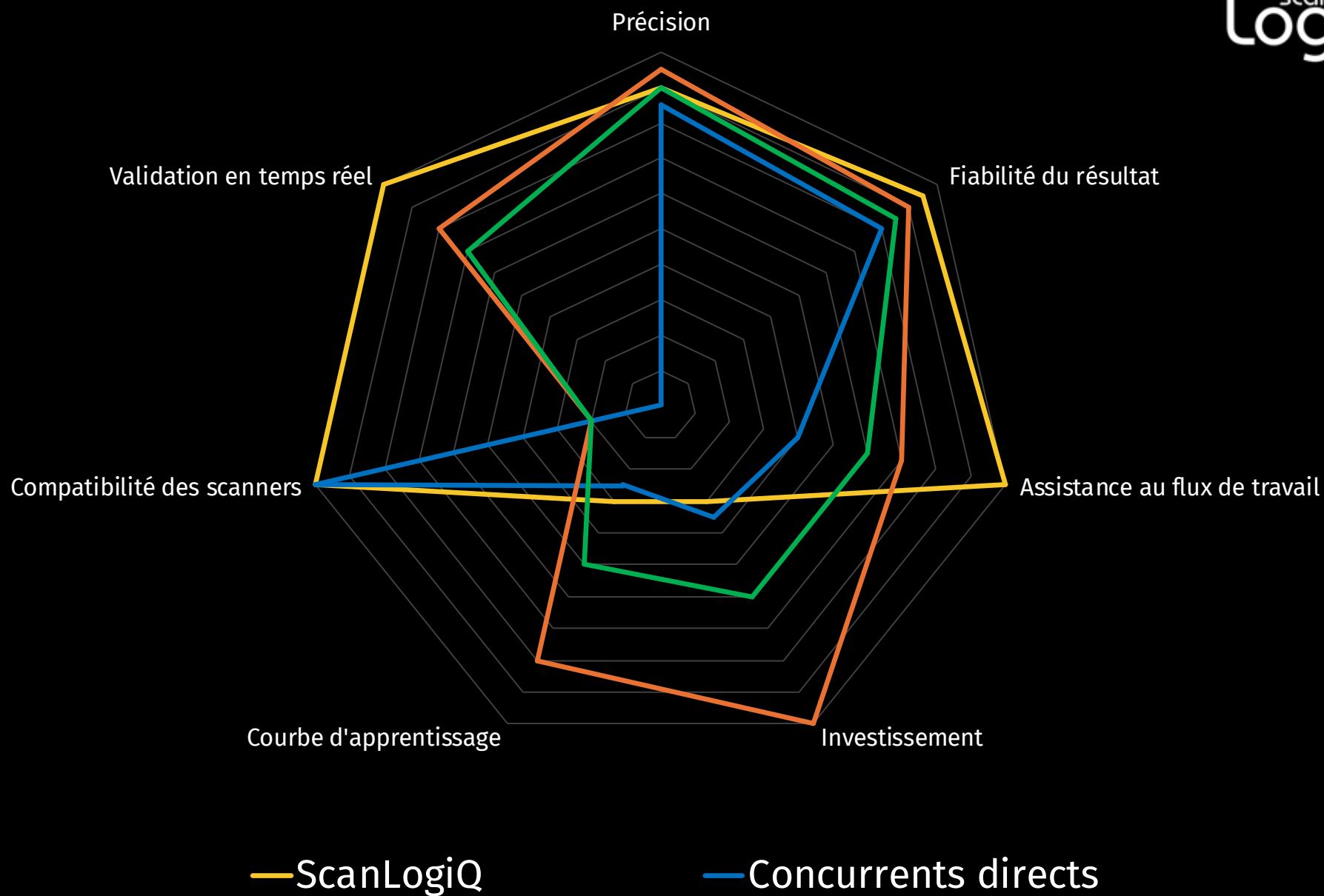
X-Ray

Clinical validation



**VÉRIFICATION**

# MARCHE



**LA COMBINAISON GARANTISSANT  
LE MEILLEUR AJUSTEMENT**

